



An introduction from Somersham Parish Council Chairman Steve Criswell

Welcome to our latest plan for the local community. I refer to it as 'our' plan because it belongs to all of us and has been shaped and influenced by all of those who chose to contribute. Thank you to those who did.

Why do we need a Community Plan?

"Influence and decision making by local people for local people" is my definition of Localism and allows us to act in the best interests of our own community. The research and consultation undertaken in preparing the Plan enables us to understand residents' concerns and aspirations so they can be incorporated in future actions and decisions. Importantly the interactive approach we adopted, encouraging residents to use cameras to capture the positive and negative aspects of Somersham and then recording people's reaction to the images, has allowed us to engage with a wider range of residents than was possible through the questionnaire alone.

The Parish Council has access to funds from our Council Tax and seeks grants from elsewhere. However it is only one of many valuable organisations within the community that can help respond to local needs and be influenced by the priorities identified in the Plan. It needs to be owned and recognised by us all, but to serve its' true purpose it also needs to be delivered by us all as a common goal.

The last time we did a similar exercise was the Parish Plan of 2005. During the intervening 7 years most aims have been addressed as far as possible, although there are three issues still outstanding.

- A local renewable energy project, such as a wind turbine was a long term ambition still to be realised and as technology has moved on will need to be reappraised.
- More cycle paths were asked for but have proved difficult to fund and deliver and that continues to be a popular theme.
- A village link - Pidley Parish Council is pursuing an extension to join our footpath.

We have called this new plan a Community Plan rather than a Parish Plan as we need to think broader and recognise the economic, social and governance changes that are currently taking place.

- We may wish to work more closely with our neighbours, so traditional village 'boundaries' will become increasingly blurred. Our 'community' may embrace others and vice versa.



NESTA

Making
Innovation
Flourish



Cambridgeshire



- Whether we like it or not, under all Political scenarios, the economic situation means we will be under pressure to be more self-sufficient. The more proactive we are, contributing to our own priorities, the more we will benefit by enhancing our community. Time banking is a prime example, as is working with our GPs to improve public health locally.
- Communication is a key component to achieving our aims. Disseminating useful information on services, with groups sharing experiences and offering help for mutual benefit. The Somersham4u newsletter and www.Somersham4u.org.uk website are both available for all. There is a public forum at each parish council meeting and a community notice board is on the way. The plan should be seen as a starting point for community involvement not the end.
- ‘Community’ refers to all people of all ages with a wide range of needs and interests. Recently, considerable efforts have been targeted at young people, providing additional facilities and addressing road safety. We are however, increasingly aware of the need to help older people. Transport, mobility, social and health issues can all be improved by local decisions and actions. We should not be afraid to prioritise those in most need of help. The welfare of our residents should be at the heart of everything we do.

My wider roles of District and County councillor have given me a valuable opportunity to gain outside help and support to trial and develop some community initiatives ahead of other towns and villages. Building on the excellent voluntary work and community spirit that already exists in Somersham; this puts us in a very sound position to face the challenges ahead.

This plan contains the comments, observations and requests made by Somersham residents. They have all been discussed and considered by councillors and where appropriate an initial response and realistic priority level has been added.

The Community Plan also offers a ‘Vision for Somersham’ which I hope unites us in recognising the place in which we want to live and the common goals we wish to see fulfilled. Beneath that vision sits a 10 point plan of action. Our aims and ambitions for the next few years all fit within those 10 headings. The parish council can offer leadership and some funding, but it is incumbent upon the whole community to help and be involved if we are to succeed.

I would like to thank all those who contribute to the caring and vibrant community of Somersham. This Community Plan will assist us in continuing to serve all our residents and improve our rural lives. The more people that become involved, the greater the rewards and the less onerous it will be on those that contribute.

“Our community is a jigsaw. We all represent a piece of that jigsaw and we are all of value”

Steve Criswell Chairman, Somersham Parish Council



NESTA

Making
Innovation
Flourish



Cambridgeshire



VISION FOR SOMERSHAM

“A sustainable community striving to involve and meet the needs of all our residents”

A 10 point plan for Somersham.

- 1/ Improve information and communication
- 2/ A clean and tidy village
- 3/ Enhance road safety
- 4/ Review public transport opportunities
- 5/ Improve and promote local facilities
- 6/ Encourage community involvement and self sufficiency
- 7/ Encourage opportunities for improved Health and Well-being
- 8/ Help promote the use of local shops and businesses
- 9/ Support limited housing development with appropriate community benefit
- 10/ Encourage energy efficiency and environmental sustainability



NESTA

Making
Innovation
Flourish



Cambridgeshire



HEALTH AND WELLBEING

The responsibility for Public Health is moving from the NHS to local authorities and from 2013 will be administered locally by the Cambridgeshire Health and Wellbeing Board.

All aspects of our everyday life have an impact on our health and wellbeing, from health services through to housing, employment, education, transport and community activities. Health problems can cause personal misery and are also costly to deal with. This means that working to improve community health and wellbeing, whilst respecting peoples' personal lifestyle choices, is everybody's business and in everybody's interest.

The Somersham Community Plan can start to benefit local residents by identifying three key aims;

- Using local information, evidence and advice by working with our GP practices.
- Focusing on preventing health problems by encouraging healthy lifestyles.
- Emphasising local responsibility and developing local solutions.

Currently, notable areas of concern are;

1/ The increase in obesity and diabetes

2/ Older people unable to maintain their independence

Possible actions are;

- Walk to school campaigns to encourage exercise. Organise a 'walking bus'.
- Safer cycle routes.
- Local exercise provision – equipment, areas, trim trails, activities for all ages.
- Increase dietary advice in schools and elsewhere.
- Support for older people through Time Banking and voluntary groups.



NESTA

Making
Innovation
Flourish



Cambridgeshire



Health & Well-Being Plan

Area of Concern	Using local information, evidence and advice (including working with GP Practices)	Focusing on preventing health problems by encouraging healthy lifestyles	Emphasising local responsibility and developing local solutions
OBESITY & DIABETES	<p>Promotion of national Change4Life campaign via village websites, village events and at Community Plan Launch</p> <p>Provision of walking & greenspaces maps as part of village newsletter and websites</p>	<p>Development of Wild Play sessions for children, linking with Children Centre</p> <p>Are schools a 'Health Promoting School'</p> <p>Developing and promoting community orchard, involving children in food production</p> <p>Provision of Play Equipment and Outdoor Gym Sessions for adults</p>	<p>Providing formal walking training via Health Walks Scheme</p> <p>Seeking resources to promote safer routes to schools</p> <p>Strengthening the use of the Nature Reserve for informal physical activity activities</p> <p>Exploring potential for developing a community allotment</p> <p>Exploring potential for developing safe cycleways both within the village, and to connect with other areas</p> <p>Exploring the potential for developing a 'farmers market' approach to provision of local food</p>
OLDER PEOPLE – maintaining independent living	<p>Accessing community 'cooking' resources and experiences to build recipe collection on village website</p> <p>Promotion of 'How to Keep Well and Warm in Winter' via village newsletter and website</p> <p>Promotion of advice on how to prevent falls via village newsletter and website</p> <p>Together with GP Practices, promote uptake of flu vaccination</p>	<p>Development of Wild Play sessions for older adults/Grandparents</p> <p>Development of gardening programme for residents of Windsor Court</p> <p>Right Start physical activity programme – pilot; this to include a falls prevention element</p> <p>Explore links with CCC Community Navigator Scheme</p> <p>Explore feasibility of 'carry on cooking'</p>	<p>Timebank provision – encouraging older people to also contribute</p> <p>Promotion of Nature Reserve to residents of Windsor Court</p>

Environmental Well-Being

Issue Identified	Community Comments	Potential Action	10 Point Plan Category No.	Long/Medium/Short Term Priorities/Goals
More information is needed about open spaces (e.g. the Lake) and community groups.	<ul style="list-style-type: none"> All the open spaces should be better advertised within the village – even local people are not aware of their existence Is there still a dial and ride? I don't know a lot of what happens in the village. Could use whiteboards, posters, painted walls, school newsletters, email, Facebook, website, Voices and Library Badly need an events diary More publicity desperately needed for the lake area School visits by community group Somehow get more people to read Voices, get all groups to contribute to it Hattie's sign is wonderful – it needs a little plaque to tell people who Hattie was and how the sign came about Merge LNR and LWP? Village notice board (at The Cross?) would need to be vandal proof 	A group's directory established on Somersham4u. Who will be responsible for updating it?	1	SHORT
		Create an online diary and individual/body to be responsible for administration. Somersham4u?	1	SHORT
		Reconsider the administration and moderation of Somersham4u	1	SHORT
		Promote the Lake & Nature Reserve – Somersham Nature Reserve Group	1	SHORT
		Conduct signage audit of village. Somersham Parish Council	1	SHORT
		Inform community about the background to Hattie's' Map through somersham4u website and Somersham.Org using the original 'Voices Newsletter' article.	1	SHORT



Issue Identified	Community Comments	Potential Actions	10 Point Plan Category No.	Long/Medium/Short Term Priorities/Goals
Suggestions on improving the Lake/Local Nature Reserve	<ul style="list-style-type: none"> • Bird hide and more bird boxes. • More tree planting and pruning • More lighting around lake and police being visible in evenings and move potential intimidating youths on • More litter and dog fouling control including more bins • More hard paths for prams and wheelchairs, Boardwalk in wooded area behind lake • Make sure footpaths are clearly marked • More water and bigger fish in lake for fishing and possibly have a pump • Extend nature reserve to encompass sheep fields near quarry workings so have a more circular walk • Bin and seats in Station Land (dog walking field) • More wild flowers near lake, increase disable access to lake • Remove by-law notice, promote more of what it has there, reduce vandalism around lake and Station Land, better dog proof fencing to protect sheep 	<ul style="list-style-type: none"> • By Somersham Parish Council and community groups such as Somersham Local Nature Reserve Group (SNRG) • Bylaw notices have to remain in place to inform the public of the bylaws existence • Dog owners are responsible to keep their dogs under control and away from livestock at all times, it is not the farmers responsibility 	5, 7 & 10	SHORT

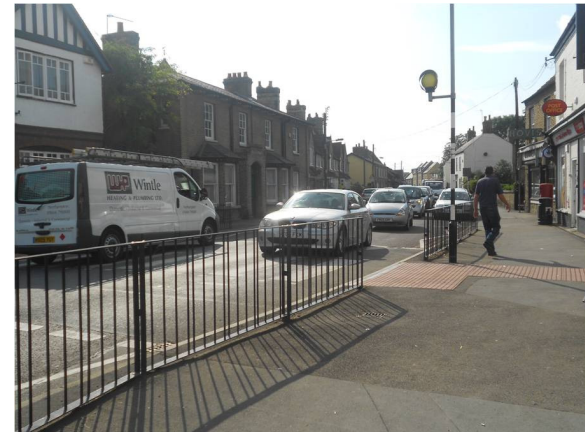
<p>Thoughts on boosting the nature areas within the village</p>	<ul style="list-style-type: none"> • More seats and shingle laid down on muddy areas • More flower displays, shrubs, plants and bulbs put around village to make it more welcoming and give people a sense of pride • More public seating 		<p>5 & 7</p>	<p>SHORT</p>
--	--	--	------------------	--------------



Issue Identified	Community Comments	Potential Actions	10 Point Plan Category No.	Long/Medium/Short Term Priorities/Goals
The need for cycle path(s) and cycle routes around the village has been expressed	<ul style="list-style-type: none"> • Designated cycle path to St Ives needed. • A good idea but will need a lot of thought to create safe cycle ways • Most folk cycle on footpaths, would be nice for young people to have somewhere safe to cycle • Cycle path necessary – Fluorescent vests needed for kids • Practice path around park would be good for beginners • A cycle path would be a good idea but there will be problems with funding and evidencing need • Need dedicated cycle paths and lanes • St. Ives and St. Ives via Colne (less hilly!) • To Chatteris and Earith using old rail track and in general • The present one needs to be advertised more • Off-road circular routes • Bike path to guided bus • Pidley Golf Club 	<ul style="list-style-type: none"> • Investigate the need for cycling in the village – are there any residents/established groups willing to take the lead on this? 	3	LONG
		<ul style="list-style-type: none"> • Consider ways of promoting cycling as an activity in the village and the barriers to this. Could the school/youth club take the lead on promotion? Does the County Council have any resources which could be used? Link in to the Carnival cycling event. 	3	LONG
		<ul style="list-style-type: none"> • Contact other Parish Councils to see if the need is a common one and if they are willing to work together on this issue. 	3	LONG
		<ul style="list-style-type: none"> • Funding issues – Too expensive in current financial climate • Contact Sustrans for advice 	3	LONG



Issue Identified	Community Comments	Potential Actions	10 Point Plan Category No.	Long/Medium/Short Term Priorities/Goals
<p>The zebra crossing in the High Street is poorly sited and potentially dangerous to use</p>	<ul style="list-style-type: none"> • High Street zebra crossing needs moving. CCC should watch how it is being used • We struggle to see the traffic when using the crossing because of the bends in the road 	<ul style="list-style-type: none"> • Contact CCC Highways to investigate use of crossing and potential options for moving crossing 	<p>3</p>	<p>ONLY SUITABLE LOCATION. (CCC HIGHWAYS)</p>
	<ul style="list-style-type: none"> • The zebra crossing is dangerous and should be moved or turned into a pelican crossing. It is too close to a four way junction and parked cars. 	<ul style="list-style-type: none"> • Investigate other ways of making the crossing safer in the short term 	<p>3</p>	<p>COUNTY HIGHWAYS SAFETY AUDIT COMPLETED & SATISFIED CROSSING ACCEPTBLE</p>



Issue Identified	Community Comments	Potential Actions	10 Point Plan Category No.	Long/Medium/Short Term Priorities/Goals
<p>There is concern over dog mess on the Norwood Playing Field and other areas in the village.</p>	<ul style="list-style-type: none"> • Keep dogs off playing fields • Name and shame offenders – many people can take photographs using their mobile phones and these can be posted on a website/notice board (could lead to victimisation of informers though) • Name and shame! • Lake area is also affected, more publicity needed, animal welfare officer could visit schools and youth club • This is a problem but is difficult to enforce • All paths are a problem. Embarrass those that cause the problem. • A lot more control with on the spot fines if people caught and prosecution • More litter bins and Dog 	<ul style="list-style-type: none"> • Norwood Playing Field Dog Exclusion Order in place as at 1 Dec 2011 	2	MEDIUM
		<ul style="list-style-type: none"> • Investigate campaigns in other areas (e.g. Redditch) which have addressed this issue. • Keep Britain Tidy campaign 'Poo Fairy' • Arrange training / promotion campaign with Huntingdonshire District Council Animal Welfare Officer 	2	MEDIUM

	<p>mess bins should be provided</p> <ul style="list-style-type: none"> • Pavements should be cleaned from dog mess and litter more regularly • Let dogs on the field again. There should be more 'PICKUP YOUR OWN MESS' signs around the different facilities in the village. All fines should go to Parish Council to be spent on village concerns. Perhaps there should be somebody who warden's it. 	<ul style="list-style-type: none"> • The public should be encouraged to report these issues 	<p>2</p>	<p>MEDIUM</p>
--	--	--	----------	---------------



Issue Identified	Community Comments	Potential Actions	10 Point Plan Category No.	Long/Medium/Short Term Priorities/Goals
<p>Ideas for improving the quality of the roads, parking and easing traffic congestion</p>	<ul style="list-style-type: none"> • Proper parking in High St. Stop people parking outside chip shop, bad parking if allowed • Speed humps or camera, more checks on speeding, 20mph zone in school areas and down the High St • There should be more double yellow lines along High St and outside Bonnett's and remove Bonnett's loading bay to make it safer • More off-road parking should be made available along the High St, perhaps even using some part of the Tesco car park. 	<ul style="list-style-type: none"> • Pursue speed reduction measures • Pursue 'give way' signage on Tesco exit to High Street 	<p>3</p>	<p>LONG</p>

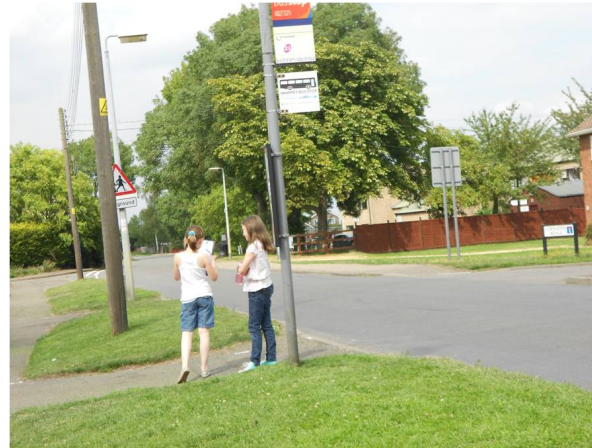


Issue Identified	Community Comments	Potential Actions	10 Point Plan Category No.	Long/Medium/Short Term Priorities/Goals
Parking in the village centre is difficult and illegal parking is common in certain areas	<ul style="list-style-type: none"> • More police visits to stop parking outside chip shop, some people even eat their chips in their cars on the yellow lines. • Always more spaces needed than available, need to encourage less selfish parking • Make Somersham one way and use the Hammond Loop • Most people walk, there is sufficient parking in the village • This is a big issue. Education recommended. Potentially an awareness campaign involving young people to educate drivers. Maybe a bigger role for the police in this • Name and shame. Collect registrations, council to trace owners of cars and publicise • Car park needs to be better signed or sign repositioned 	<ul style="list-style-type: none"> * Contact police over illegal parking issues and develop an awareness and prevention plan 	3	SHORT
		<ul style="list-style-type: none"> * Investigate possibility of school/youth club running a 'proper parking' campaign 	3	MEDIUM
		<ul style="list-style-type: none"> * Contact school to request information to be distributed about safe parking and driving down Parkhall Rd 	3	SHORT
		<ul style="list-style-type: none"> * Investigate the feasibility of making Somersham more cycle friendly (separate issue later) 	3	LONG
		<ul style="list-style-type: none"> * Develop a realistic parking plan for the village 	3	CARRIED OUT IN 2009 with Cambridgeshire Highways and revised Traffic Regulation Orders (TRO's) implemented



Issue Identified	Community Comments	Potential Actions	10 Point Plan Category No.	Long/Medium/Short Term Priorities/Goals
<p>Comments about the ease of travel to and from Somersham, including traffic issues</p>	<ul style="list-style-type: none"> • Difficult getting through centre with parking in the way plus aggregate lorries coming through, maybe allow at more appropriate times and not at peak times. • Becoming more busier and dangerous in High St especially near Tesco's • Congestion High St and the Parkhall Rd / High St junction • Lower speed limit near the Windmill PH as cars pull out when others are going too fast • Zebra crossing needed on St. Ives Road to slow it down • Road condition beyond New Line Bridge (disused railway bridge at Parkhall Rd) is poor • Accurate and up-to-date info on road closures especially for Earith • Reduce use of private vehicles and get more frequent bus service • Need bus stop near The Pastures • More frequent public transport, no buses Sundays or bank holidays, bus to Peterborough needed • More info regarding pickup points and timetables. Timetables need to be better, changed less and people 	<ul style="list-style-type: none"> • Under review • Link to the website • Approach the bus companies to discuss ways forward 	3 & 4	MEDIUM

	<p>told</p> <ul style="list-style-type: none"> • Good guided bus service, runs at inconvenient times, cannot use for work to return for school run, doesn't return late enough • Better direct bus service to St. Ives, takes long time via public transport. More afternoon and evening buses from St. Ives to Somersham • Bus service poor, need car, unable to get to hospital via public transport • More direct bus service to St. Ives, Huntingdon and Cambridge to be at least every hour • Community transport arrangements need to be better advertised 	<ul style="list-style-type: none"> • Approach the bus companies to discuss ways forward • Public transport review in early 2014 	<p>3 & 4</p>	<p>MEDIUM</p>
--	---	---	------------------	---------------



Issue Identified	Community Comments	Potential Actions	10 Point Plan Category No.	Long/Medium/Short Term Priorities/Goals
<p>Litter and broken glass outside the pubs and in other residents' garden</p>	<ul style="list-style-type: none"> Public Houses at The Cross are very noisy at night and there is broken glass everywhere Glasses, cans and other litter from pub users are dumped on the pavement and in other people's front gardens Try and get more co-operation from publicans – it must be costing them money in lost glasses. 	<p>* Talk to pub landlords about ways of encouraging responsible behaviour</p> <p>* Investigate funding sources and schemes for village improvement/clean up schemes – could be a good opportunity for young people and their families to get involved – Scouts/Cubs/Guides/School/Children's Centre</p>	<p>2</p>	<p>MEDIUM</p>



Issue Identified	Community Comments	Potential Actions	10 Point Plan Category No.	Long/Medium/Short Term Priorities/Goals
Suggestions for improving the safety of the Village	<ul style="list-style-type: none"> • Police need to take more action • Lack of control by parents of young teenagers • Police and population working together, more police • Better streetlights • More for young people to do. Encourage young people to help/volunteer for maintenance • Less drug taking • CCTV 	<ul style="list-style-type: none"> • Continue dialogue with police • Work with the youth club, schools & neighbourhood schemes • Introduce a Respect Code? 	1, 2, 5, 6, & 7	SHORT

Issue Identified	Community Comments	Potential Actions	10 Point Plan Category No.	Long/Medium/Short Term Priorities/Goals
Concerns over the installation of a wind farm within the parish (104 in favour, 47 against)	<ul style="list-style-type: none"> • 9 are not sure and need more information • Potential noise, location, shadow, 'eye-sore', outer boundary • Big cost, negligible benefits, not proven to be efficient or financially beneficial • As long as council tax does not rise to fund installations of environmental projects • Think more about how renewable energy can be used 	<ul style="list-style-type: none"> • Feasibility study for a wind farm and alternative environmentally friendly energy sources 	10	LONG

Issue Identified	Community Comments	Potential Actions	10 Point Plan Category No.	Long/Medium/Short Term Priorities/Goals
<p>Concern about the condition and cleanliness of the pavements and roads around the village</p>	<ul style="list-style-type: none"> • Make sure council resurfaces roads/paths properly. • Enhance paving around centre of village to make it more attractive • Make regular sweeping up of leaves, litter and dog mess where mechanical sweeper cannot reach especially in alleyways and around garage areas • Reduce /cutback trees and bushes that have encroached onto the pavement making it narrower e.g. Cranfield Place and The Trundle • Get road sweeper to start after 9am so it can get access to most areas in cul-de-sacs 	<ul style="list-style-type: none"> • Continue on-going contact with County Highways and property owners • Send 6 monthly reminders to Huntingdonshire District Council to clean and maintain their areas around the housing estates 	2	SHORT



Economic Well-Being

Issue Identified	Community Comments	Potential Actions	10 Point Plan Category No.	Long/Medium/Short Term Priorities/Goals
<p>The village is pleased with its range of shops and is concerned that some may close in the future; there is particular concern over the importance of maintaining a village Post Office</p>	<ul style="list-style-type: none"> • Many village around us would love to have the quality of shops we enjoy • We need to keep a Post Office in the village • Could be a better place for the Post Office, other options include one of the other shops, library (would increase library users?), Parish Council (last resort) • Post office to embrace internet shopping • Tesco's got planning without thought about the traffic, get rid of Tesco's. • Doctors, early morning appointments needed • Bring back recycle bin to get money for village • Promote use of local shops more and prevent large chains entering the village and driving others out • Attract more small businesses by helping to convert farm buildings and expand industrial area to create 	<ul style="list-style-type: none"> • Consider a 'use it or lose it' campaign and who could run it. • Last run in 2009 by Somersham Parish Council. Poor response from shop keepers. 	8	MEDIUM
		<ul style="list-style-type: none"> • Meet with village shopkeepers to consider how they can promote their shops and what further services they could provide • Planning permission not required as the property was already a retail outlet. • Credits were paid to encourage re-cycling before glass bottles could go in the blue wheelie bins 	8	LONG

	<p>local jobs</p> <ul style="list-style-type: none"> • A weekly farm market, maybe organised by the allotment holders to sell their produce. 	<ul style="list-style-type: none"> • Investigate the feasibility of a local market & relevant licences • Approach allotment associations to sell excess produce? 	8	LONG
--	---	--	---	------

Issue Identified	Community Comments	Potential Actions	10 Point Plan Category No.	Long/Medium/Short Term Priorities/Goals
Issues regarding the pubs within the village	<ul style="list-style-type: none"> • Need good quality village pub/restaurant not ones that are just for kids/drunks • Take responsibility for mess, rubbish and breakages outside their establishments • Desire for a family pub 	<ul style="list-style-type: none"> • Commercial decisions 	8	LONG



Social Well-Being

Issue Identified	Community Comments	Potential Actions	10 Point Plan Category No.	Long/Medium/Short Term Priorities/Goals
Millennium Sports Facility	<ul style="list-style-type: none"> • More lights needed and notice board showing events e.g. Fixture list • Cleaner 	<ul style="list-style-type: none"> • Inform Somersham Sports & Leisure Association and request early feedback 	5	SHORT
The Library	<ul style="list-style-type: none"> • Improve heating, extend, up-to-date computers, more seating, open in mornings, newer books • Local government to help fund library • Longer opening hours 	<ul style="list-style-type: none"> • Inform Friends of Somersham Library and request early feedback • Already part funded by parish council and supported by county council. 	5	SHORT
All village facilities	<ul style="list-style-type: none"> • Think about being more energy efficient and ways to save money • All facilities should be kept clean, tidy and welcoming giving a feel of safety. 	<ul style="list-style-type: none"> • Work with all village facility providers 	5	SHORT

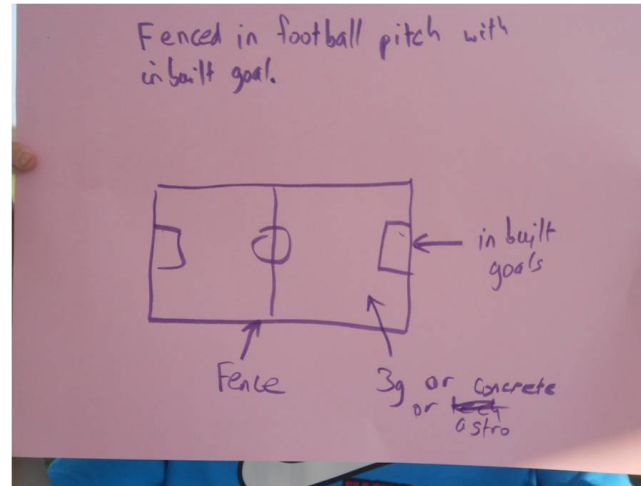
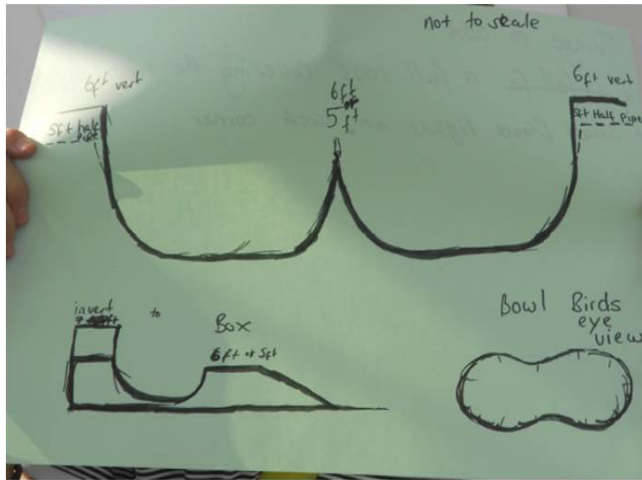
Issue Identified	Community Comments	Potential Actions	10 Point Plan Category No.	Long/Medium/Short Term Priorities/Goals
Somersham Town Football Club The Scout Hut	<ul style="list-style-type: none"> • Would like to move to a bigger and more up-to-date facility 	<ul style="list-style-type: none"> • Inform Somersham Town Football Club and request early feedback 	5	SHORT
	<ul style="list-style-type: none"> • Structure needs updating 	<ul style="list-style-type: none"> • Inform 1st Somersham Scout Group and request early feedback 	5	SHORT

Issue Identified	Community Comments	Potential Actions	10 Point Plan Category No.	Long/Medium/Short Term Priorities/Goals
Use of the Churches in the village.	<ul style="list-style-type: none"> • For the Parish Church; improve kitchen and toilet facilities, extra help in Churchyard needed. More relaxed and modern approach. 	<ul style="list-style-type: none"> • Inform St John the Baptist Church, Church Street and request early feedback 	5	SHORT
	<ul style="list-style-type: none"> • For the Baptist Church; improve lighting and heating parish church - add toilet 	<ul style="list-style-type: none"> • Inform the Baptist Church, High Street and request early feedback 	5	SHORT





Issue Identified	Community Comments	Potential Actions	10 Point Plan Category No.	Long/Medium/Short Term Priorities/Goals
Suggestions on improvements for The Victory Hall	<ul style="list-style-type: none"> • Update and maintain outside appearance, needs updating especially toilets, replace curtains, buy new chairs, ceiling insulation • Greener, more and better lighting inside and outside especially in car park when dark • Improve entrance as it is difficult to access and make sure litter and leaves are removed • Keep it clean and inviting, coffee bar/drop-in centre • Large notice board showing events and clubs at Victory Hall and elsewhere • More control on noise from music events in Victory Hall as close to houses • To be able to book Victory Hall for badminton and 5-aside football • Let users have access to Victory Hall toilets or provide a public toilet during the day 	<ul style="list-style-type: none"> • Inform Victory Hall Management Committee and request early feedback 	5	MEDIUM
Improvements to the Norwood Playing Field	<ul style="list-style-type: none"> • Anybody going against the park rules e.g. Vandalism, litter, intimidation, unruliness should be excluded after one caution • Bigger and better skate ramp and more seats • 2 goals and marked out pitch 	<ul style="list-style-type: none"> • Consider temporary or permanent external toilet on site 	5	LONG



Issue Identified	Community Comments	Potential Actions	10 Point Plan Category No.	Long/Medium/Short Term Priorities/Goals
Improvements to the quality of life of older people in the village <ul style="list-style-type: none"> Maintenance of existing village groups 	<ul style="list-style-type: none"> 'Grow' and encourage your new people so that they are confident to take on more responsibility in the future We've always asked for people to help and so far someone has turned up Will Time Bank be able to plug gaps? Every group struggles to get new leaders – promotion via newsletters, somersham4u etc. I really like the clubs for us 'oldies' 	<ul style="list-style-type: none"> Work with existing groups to put in place plans for future leadership and funding 	7	MEDIUM
		<ul style="list-style-type: none"> Encourage the use of all the different advertising methods in the village 	5 & 6	MEDIUM
		<ul style="list-style-type: none"> Assistance from library / schools for someone/group to support older people who run groups to use the internet Promote Time Bank 	5 & 6	MEDIUM
<ul style="list-style-type: none"> Uneven and narrow pavements 	<ul style="list-style-type: none"> Pavement on Feoffees Road has an adverse camber and is difficult for wheelchairs and to walk on Pavements in the housing estates are made with cars, not pedestrians in mind. They go up and down at steep angles which are dangerous and awkward for pushchairs, people with dodgy hips and knees etc. and bad in the winter. Pavements are too narrow for wheelchairs and mobility scooters 	<ul style="list-style-type: none"> Consult widely with older people to identify 'hot' spots'. Consider options for improvements. Review dropped kerbs throughout the village 	3	MEDIUM

<ul style="list-style-type: none"> • Transport out of the village 	<ul style="list-style-type: none"> • I don't get out of the village • I rely on my family for trips out • Can get a lift to the hospital • My family takes me out • Tesco's is a good thing as most elderly people can't get out of the village 	<ul style="list-style-type: none"> • Establish what (if any transport schemes are provided) • Promote existing services 	4	LONG
		<ul style="list-style-type: none"> • Consider how to promote any existing schemes – groups, Windsor Court, Age Concern? 	4	LONG
		<ul style="list-style-type: none"> • Consult with older people to establish needs – groups to do this? 	4	LONG
		<ul style="list-style-type: none"> • Research existing transport schemes elsewhere: funding and organisation 	4	LONG
		<ul style="list-style-type: none"> • Option for Time Banking? 	4	LONG
<ul style="list-style-type: none"> • Lack of an evening socialising venue (many see the pubs as 'not for them') 	<ul style="list-style-type: none"> • Nowhere for older people to go and have a meal or drink in the evening • Lack of a decent pub that can be used by all ages • The pubs are not very attractive to us • Somersham Football club will be opening its bar on Wednesday to view the Champions League football matches on TV • <i>NB – from the groups consultation most groups did not consider this a problem and thought there were plenty of places to meet, have a meal etc.</i> 	<ul style="list-style-type: none"> • Discuss this with pub landlords – is it possible to set aside dates/a night of the week which would be 'quieter' and more suitable for older people? 	5 & 7	MEDIUM
		<ul style="list-style-type: none"> • Consider how to support a new venue – book meetings, hold groups there, and make it a joint venture with an established venue which is not currently in use in the evening? 	5 & 7	MEDIUM



Issue Identified	Community Comments	Potential Actions	10 Point Plan Category No.	Long/Medium/Short Term Priorities/Goals
Additional facilities to add to the village	<ul style="list-style-type: none"> • Swimming Pool (18), Fitness centre (5) and a leisure centre • Public toilet (2) • Cinema • More disabled facilities and activities • Activity centre for teenagers, Drama group (2), More for youngsters • Monthly film night, Youth club, Faster broadband • Adult learning classes to gain new skills • Mother and baby groups (make sure they are advertised if there are some already),more baby/children’s facilities • Bank • Men’s club mid-afternoon selling no alcohol • Christmas or Easter fair • Re-introduce recycling facilities that benefit the community 	<ul style="list-style-type: none"> • Prohibitively expensive • Consider outdoor fitness equipment on the Norwood Playing Field • Promotion of and introduction of activities/classes through Time Bank, the Community Information Centre etc. • Source funding opportunities 	5, 6 & 7	LONG

Issue Identified	Community Comments	Potential Actions	10 Point Plan Category No.	Long/Medium/Short Term Priorities/Goals
<p>Suggestions for improving the communication of parish information and events</p>	<ul style="list-style-type: none"> • Information packs for newcomers available from library, put it in Village Scene • More notice boards around village in main residential areas, Outside Schools, Shops, Parks, Lake and all other leisure facilities • One big notice board at The Cross and make sure all notice boards are updated and with a high profile so people can see them (possibly electronic), Notice in doctors surgeries and library • Advertise the existence of the websites • More posters on street lamps/posts instead of relying on internet • Event calendar on Somersham 4 u website. Display hard copy on notice boards • Diary of events page in Voices and have a more regular publication, Births, baptism, marriages, deaths mentioned in Somersham4u. Include more info in Village Scene and somersham4u • Monthly newsletter in shops and library • Notice in local shops, include up-to- 	<ul style="list-style-type: none"> • Information/welcome pack. Potential to develop with the schools • Community notice board on The Cross • Display bus time tables. Consult with Stage Coach & Whippet • Consider all community suggestions and implement where possible. (Fly posting is not an option) 	1	SHORT

	<p>date Parish Council minutes on website</p> <ul style="list-style-type: none"> • Residents beyond New Line Bridge (Parkhall Road disused railway bridge) seem to be forgotten when giving info etc. • Deliver free info to Bishops Yard! • Brief monthly newsletter or full publication for people who voluntarily give their email address (saves paper) - 7 people liked this idea • Local papers/local directory, Remove parish notice from Tesco's wall and put in independent position • Employ a 'Town Crier' • Leaflets in doors • Official bus stop sign at The Cross • Less of a them and us feel (more relaxed approach), need to know more about councillors 	<ul style="list-style-type: none"> • 'Spot light' on individual parish councillors on website & in newsletter 	<p>1</p>	<p>SHORT</p>
--	---	--	----------	--------------

Issue Identified	Community Comments	Potential Actions	10 Point Plan Category No.	Long/Medium/Short Term Priorities/Goals
Issues regarding the village run websites	<ul style="list-style-type: none"> Somersham.org; dated, get email link working, don't use somersham4u.org.uk; get email link working, don't use, would like to see more group information, review in somersham4u as to what this website provides Facebook page; don't like Facebook, get email link working, don't use, review in Voices as to what this website provides somershamvictoryhall.org.uk; review in somersham4u as to what this website provides 	<ul style="list-style-type: none"> CONTINUALLY REVIEW 	1	SHORT

Issue Identified	Community Comments	Potential Actions	10 Point Plan Category No.	Long/Medium/Short Term Priorities/Goals
Suggested improvements for the Parish council	<ul style="list-style-type: none"> To be proactive and do things for the village - 124 people To keep to the minimum/basic parish needs – 33 people Find out what residents want the most first before going ahead. Always ask the public (vote) for large expenses to see if people really want it Council tax is already too high Encourage other organisations to be proactive Be forward thinking and creative Hear more from Councillors 	<ul style="list-style-type: none"> CONTINUALLY REVIEW Referendums are expensive and councillors are elected to make decisions Encourage elections and public attendance at meetings 	1	SHORT

Issue Identified	Community Comments	Potential Actions	10 Point Plan Category No.	Long/Medium/Short Term Priorities/Goals
Areas in Somersham people feel unsafe	<ul style="list-style-type: none"> • Intimidating near the George's outside seating • Passing by pubs in centre especially when dark, High St Saturday night and in summer months when more people are outside • At the cross, around the lake, at Norwood playing field, Station Approach all at night/when it's dark • Speeding vehicles, Cranfield Place (no street lights) • Horse riding on roads • Uneven pavement Parkhall road • The fast and busy High St and on St. Ives Rd • Corner of High Street/Feoffees Road • Church and Parkhall Road (too dark) • Alleyway between doctors and Crane Close (at night), alley between The Paddock to Homestead and Homestead to Penn Way • Outside Bonnett's in the dark, Zebra crossing as some people do not slow down or stop • Victory Hall at night, near to New Line Bridge, Parkhall Rd at night • Somersham FC due to recent burglaries 	<ul style="list-style-type: none"> • CONTINUALLY REVIEW • Continue to liaise with Police • Links with the road safety audit see page 18 	6 & 7	SHORT

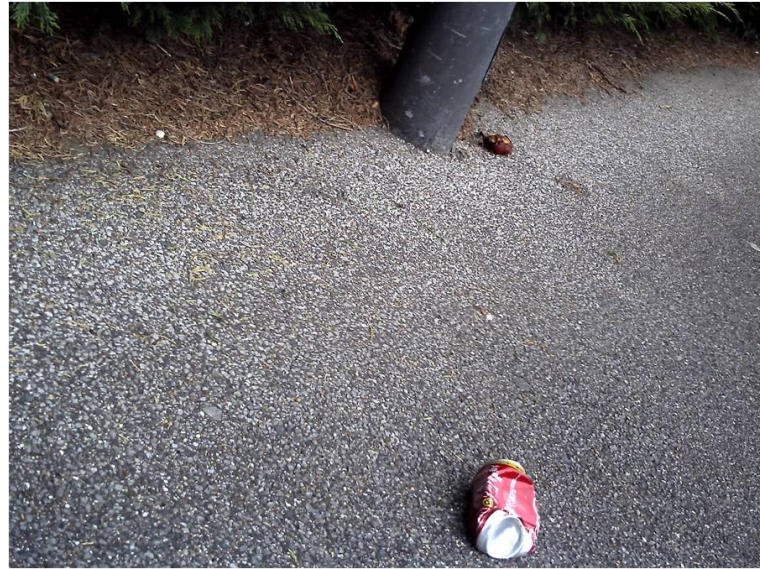


Issue Identified	Community Comments	Potential Actions	10 Point Plan Category No.	Long/Medium/Short Term Priorities/Goals
<p>There is a desire for more activities and events for all in the village</p>	<ul style="list-style-type: none"> • Co-ordinate activities by bringing like-minded groups together so they can share costs and resources. • More advertising of clubs, social events so whole community knows what is on offer and when • More charity events with proceeds going to local causes • Family friendly meeting place and place for mums to meet up for a chat • More activities for the 40 – 50's, more activities for all age groups to relax and feel comfortable. More for youngsters to get involved in rather than congregate around the public facilities • Support and encourage all local groups and encourage stale committees to be more proactive and vibrant 	<ul style="list-style-type: none"> • CONTINUE TO REVIEW & PROMOTE • Share feedback with local groups 	<p>5, 6 & 7</p>	<p>LONG</p>

Issue Identified	Community Comments	Potential Actions	10 Point Plan Category No.	Long/Medium/Short Term Priorities/Goals
<p>Top priorities for spending the council tax around the village</p>	<ul style="list-style-type: none"> • Self-sufficiency - Looking after Somersham people, bus shelter at Windsor Court stop, improve village facilities, more for teenagers. Sustainable community, upkeep of public buildings, keep the village a safe and friendly place. Keep the good handyman • Speed humps and speed control, especially High St and King St • Upkeep of open areas, support for voluntary services e.g. Library, lake party, Community facilities. • Humorous anti-litter campaign • Sports facility e.g. 3g pitch and cycle paths • Low energy street lighting as well as more lighting in general. • Youth Projects and more for the young to keep them out of trouble • Should reduce precept to 2.5%, find efficient ways of finding what residents want then let them know of the cost implications • Lake lighting, level of water due to lack of rain • Leisure Facilities, clearing litter & footpaths. Area between Shortlands & Harvey Drive knee deep in leaves 	<ul style="list-style-type: none"> • Somersham Parish Council to delegate work to the appropriate council working parties 	2, 3, 5, 6, 7 & 8	LONG

	<p>and cans, resurface uneven footpaths and Parkhall road. Remove grass verge between 16 & 26 Parkhall so easier to walk along footpath</p> <ul style="list-style-type: none"> • Energy saving projects and public toilets, only things that are really needed and public should be consulted first • Improved security in the village, neighbourhood watch scheme. More police, focus more on anti-social behaviour, resident policeman • Community facilities for varied ages and interests, protecting rights and comforts of all age groups and organise more community events. Clubs for elderly people & transport to and from destination • Litter and dog fouling prevention, anything to improve village life, remind people what areas Somersham PC can spend in 	<ul style="list-style-type: none"> • Somersham Parish Council to delegate work to the appropriate council working parties 	<p>2, 3, 5, 6, 7 & 8</p>	<p>LONG</p>
--	--	--	------------------------------	-------------





Issue Identified	Community Comments	Potential Actions	10 Point Plan Category No.	Long/Medium/Short Term Priorities/Goals
Ideas and feedback regarding events in the village	<ul style="list-style-type: none"> • The 'carnival' has less stalls compared to previous years and needs a revamp • The 'community fair' limited public response, more for different ages, action day focused too much on young, unexciting, lack lustre • 'One day in Somersham' was worthwhile but pity not more people. A good idea but share outcome through other means other than follow-up event • 'Localism' has not heard anything about it since the event. Too political and too far from reality. Provided a 'start' but should be followed up with concrete plans, unexciting, lack lustre, 1 person not sure what it is and what impact it has had. The speakers were poor and uninformative. Events other than the carnival were not advertised. 	<ul style="list-style-type: none"> • FEEDBACK TO THE VARIOUS GROUPS & ORGANISATIONS • This Community Plan • Time Bank • Somersham4u website and newsletter • 'Our Somersham' on Facebook • Helping older people project 	1 & 6	SHORT

Issue Identified	Community Comments	Potential Actions	10 Point Plan Category No.	Long/Medium/Short Term Priorities/Goals
There are a number of ideas regarding housing within the village	<ul style="list-style-type: none"> Encourage house owners/developers to tidy up fronts of properties especially ones boarded up on High St near garage Reduce new houses being built and Green belt being used. Unused houses should be used before new ones being built. If somebody has trouble buying/selling a house encourage a House Swap scheme 	<ul style="list-style-type: none"> KEEP UNDER REVIEW Consider contacting Luminus Housing & housing agents No Green Belt in Huntingdonshire 	9	LONG

Breakdown of consultation

Photography: 54 consulted including 25 young people

Action evening: 33 consulted including 6 young people

Group and organisation evening: 27 consulted, no young people

Friends of Somersham visit: 10 older people consulted, no young people

Questionnaire for every household : 223 female and 198 male responded, 76 Under-18, 68 19-39 year-olds, 256 40-74 year-olds and 21 over 75



NESTA

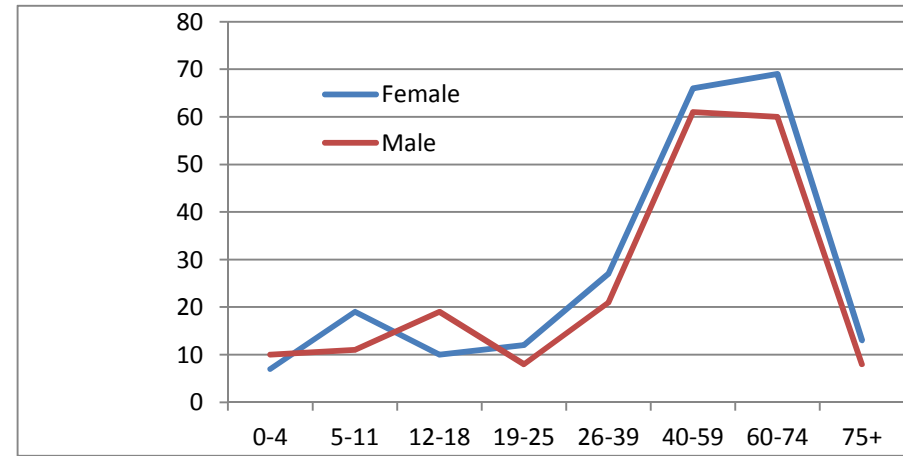
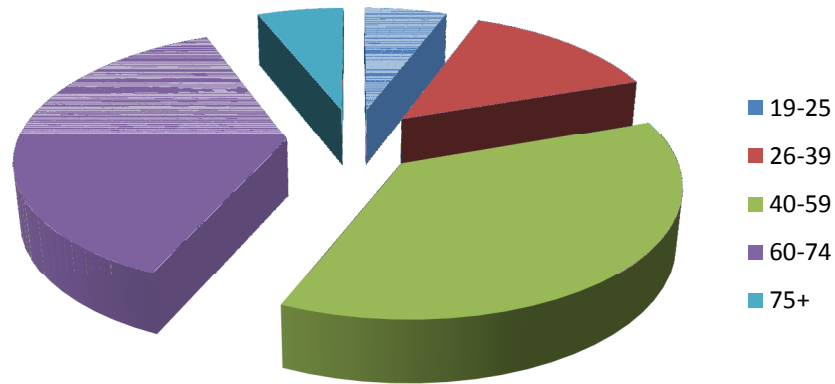
Making Innovation Flourish



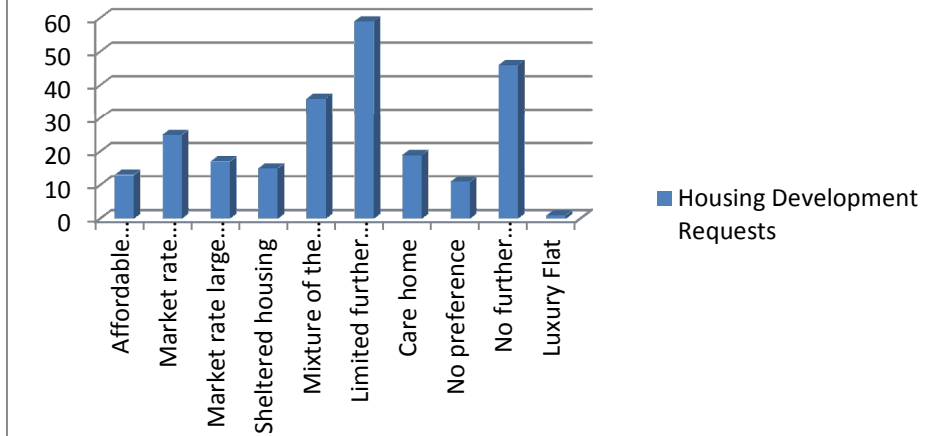
Cambridgeshire



Age Of Person Completing Questionnaire



Housing Development Requests



Facility Usage

